

NEW

ED
**HEAVY
DUTY**

MITERING CHOP SAW

evOLUTION[®]

S355 MCS

THE INDUSTRY'S FIRST

355MM METAL CUTTING MITERING CHOP SAW

IN A LEAGUE OF ITS OWN

The first 355mm mitering chop saw to hit the market.

Features a 46° - 46° mitering base with quick locking mitre handle, mitre detents at common angles and an accurate stainless steel mitre gauge.

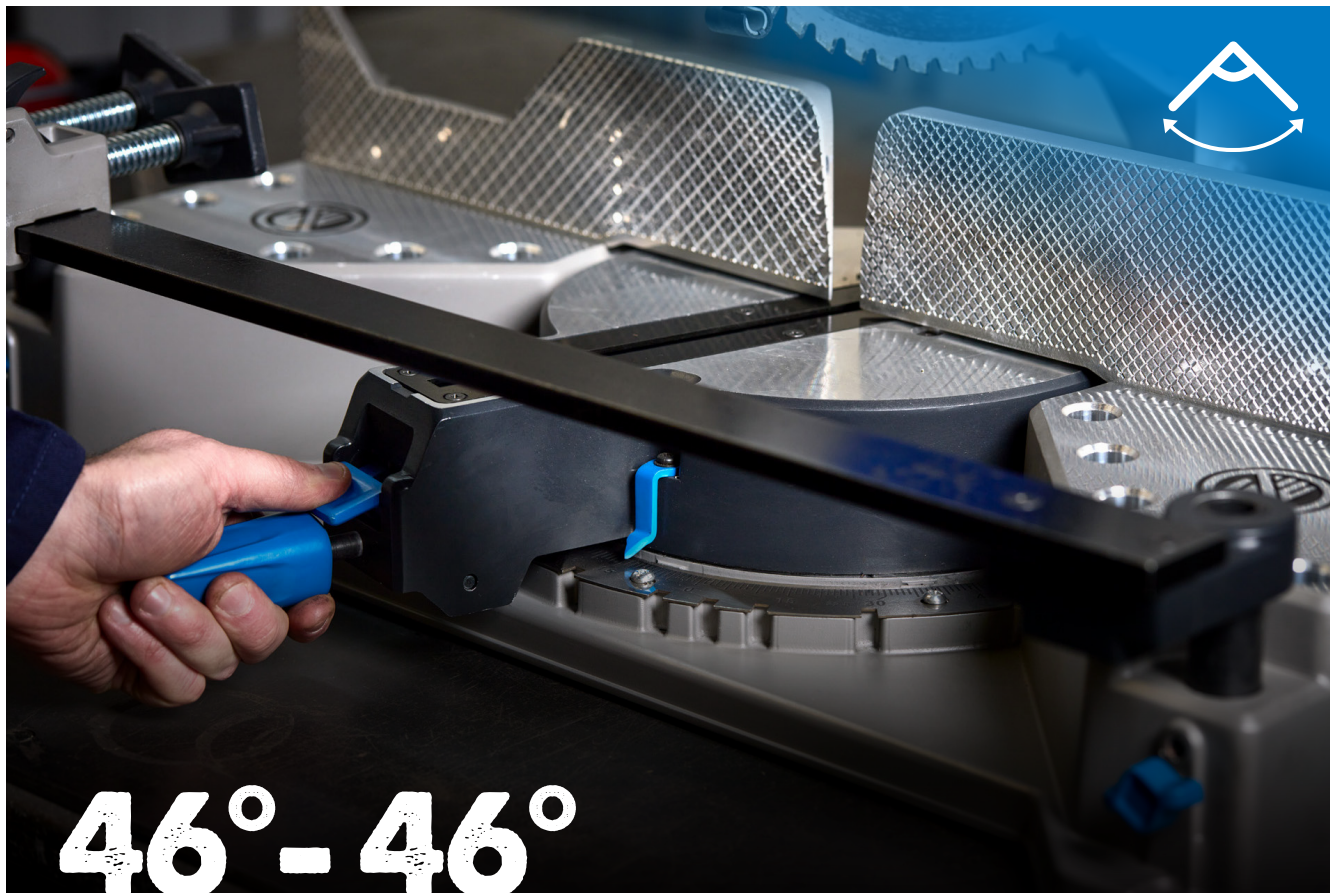
Innovative dual sliding front clamps with quick-release clasps offer quick and versatile clamping to securely hold all shapes & sizes.



<p>46° - 46° MITERING BASE</p>	<p>DUAL SLIDING FRONT CLAMPS</p>
<p>12MM* <small>*mild steel only</small></p>	<p>120MM X 120MM</p>
<p>100MM X 165MM</p>	<p>Ø 120MM</p>

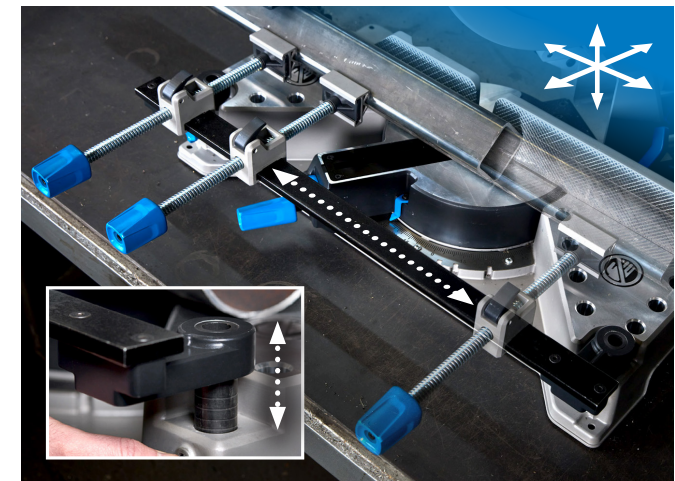
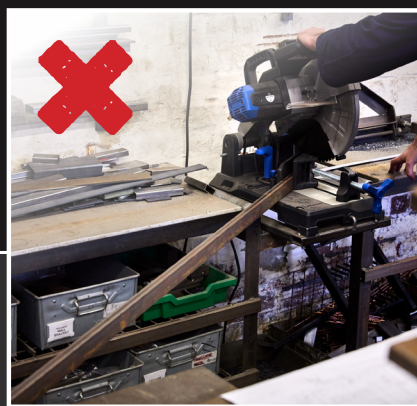
ACCURATE • RELIABLE • POWERFUL

evolution®



46° - 46° MITERING BASE

The industry's first 355mm chop saw with a mitering base. Enables you to mitre your saw instead of the workpiece, so cuts through long materials are quick and easy, even in small workshops. Features thumb lock lever and mitre detents at common angles for quick and tool free mitre setting.



Dual Sliding Front Clamp

Innovative dual sliding front clamps mounted on a height adjustable bar gives forwards, backwards, up, down, left & right movement. Features quick release lead screws.

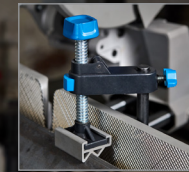


3-Position Cutting Head

Adjustable cutting head position ensures an optimal blade path through a variety of shapes for accurate cuts and maximum blade life. Features patented glide rails with locking pin

Ergonomic, Ambidextrous Handle & Trigger

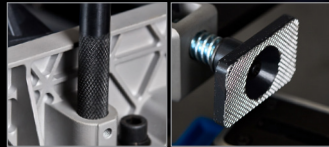
Powerful 2200W motor



Quick-release top clamp and 3 x V-block adapters included

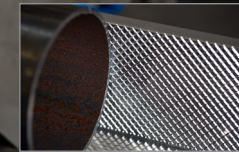
Head lock-down pin

Chip deflector



Knurled front clamp feet and top clamp bar for secure clamping

3-position head with glide rails & locking pin for easy setting



Knurled fence to securely grip the work piece



Quick-release front clamps with heavy-duty ACME lead screw

Full-width clamp bar allows free horizontal movement of the front clamps

Holes in base to fit bench dogs

46° L - 46° R miter capacity with positive stops at 0°, 15°, 22.5°, 30° & 45°

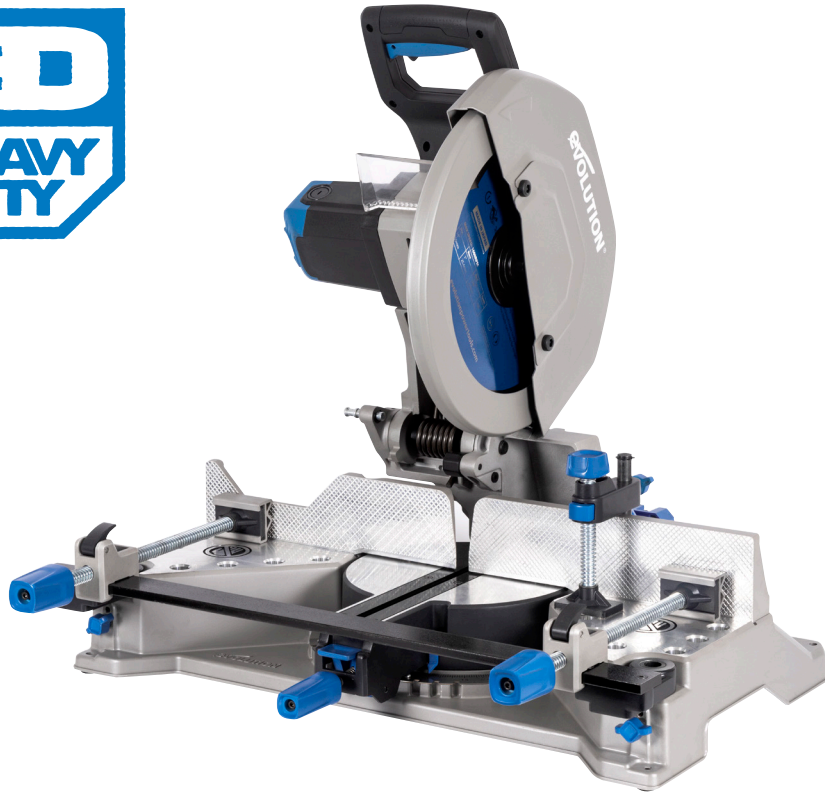
Height adjustable front clamp bar features positive stops on vertical posts and thumb screws to secure

ACCURATE • RELIABLE • POWERFUL

evOLUTION®

NEW

Motor Power	2200W	2200W	2200W
No-load Speed	1550rpm	1550rpm	1550rpm
Blade Size	355mm	355mm	355mm
TCT Teeth	66	66	36
Mitering Base & Blade	✓	✗	✗
Mitering Vice	✗	✓	✓
Front Clamp	Dual Sliding Front Clamps	Cast Iron Vice	Pressed Steel Vice
Top Clamp	✓	✗	✗
Quick-Release Clamps	✓	✓	✗
3 Cutting Positions	Sliding Head with Locking Pin	Screw Locking 3-Position Fence	Screw Locking 3-Position Fence
Knurled Fence	✓	✗	✗
RRP	TBC	£399.99	£269.99



TECHNICAL SPECIFICATION

	SKU	Barcode
UK 230v	102-0001	0849713097255
UK 110v	102-0002	0849713097262
EU 230v	102-0003	0849713097279

Motor Power 230v	2200w
Motor Power 110V	1600w
No Load Speed	1550rpm
Arbour size	25.4mm
Max. Plate Thickness	12mm
Square Tube at 90°	120 x 120mm
Square Tube at 45° ML	100 x 100mm
Square Tube at 45° MR	43 x 43mm
Rectangle Tube at 90°	165 x 100mm
Rectangle Tube at 45°	115 x 43mm
Round Tube at 90°	Ø 120mm
Round Tube at 45°	Ø 100mm
Cable Length	3m
Net Weight	35kg
Gross Weight	40kg
Packaging Dimensions	450 x 760 x 584mm
Container Quantities	20ft - 135 40ft - 300 40ft HC - 300
Guarantee	3 Years